

MAXHUB

MAXHUB LED DISPLAY

GH31 SERIES

Created for commercial excellence, the GH31 series displays are suitable for a multitude of environments, with a sleek, seamless design. Discover the benefits of the GH31 series in your lecture hall, meeting room, or exhibition space.

> Compact, streamlined appearance

- Stunning compact design
- 6.2 kg
lightweight structure
- 31 mm ultra-thin cabinet,
wall-mounted installation
saves space
- 4:3 cabinet ratio,
showing more high-definition
pixel-to-pixel



> MAXHUB OS

Explore a new era of simplicity, with a display built for exceptional ease of use. The GH31 series is compatible with MAXHUB OS for quick and easy setup. The display features a built-in Android system, with support for data transmission and wireless LAN screen sharing.



4K controller

Additional features include proprietary 2K,4K controller. Self-adaptive resolution, supports PIP/PBP four-screen split under 4K controller.



➤ Seamless Integration

Excellent stability, easy maintenance, and consistent quality, with low power consumption

- Three-in-one receiving card, power supply, and HUB board, no internal cabling, high stability
- All front maintenance, replacement of LED module spare parts in seconds
- Calibration data is automatically read back, user-level maintenance experience

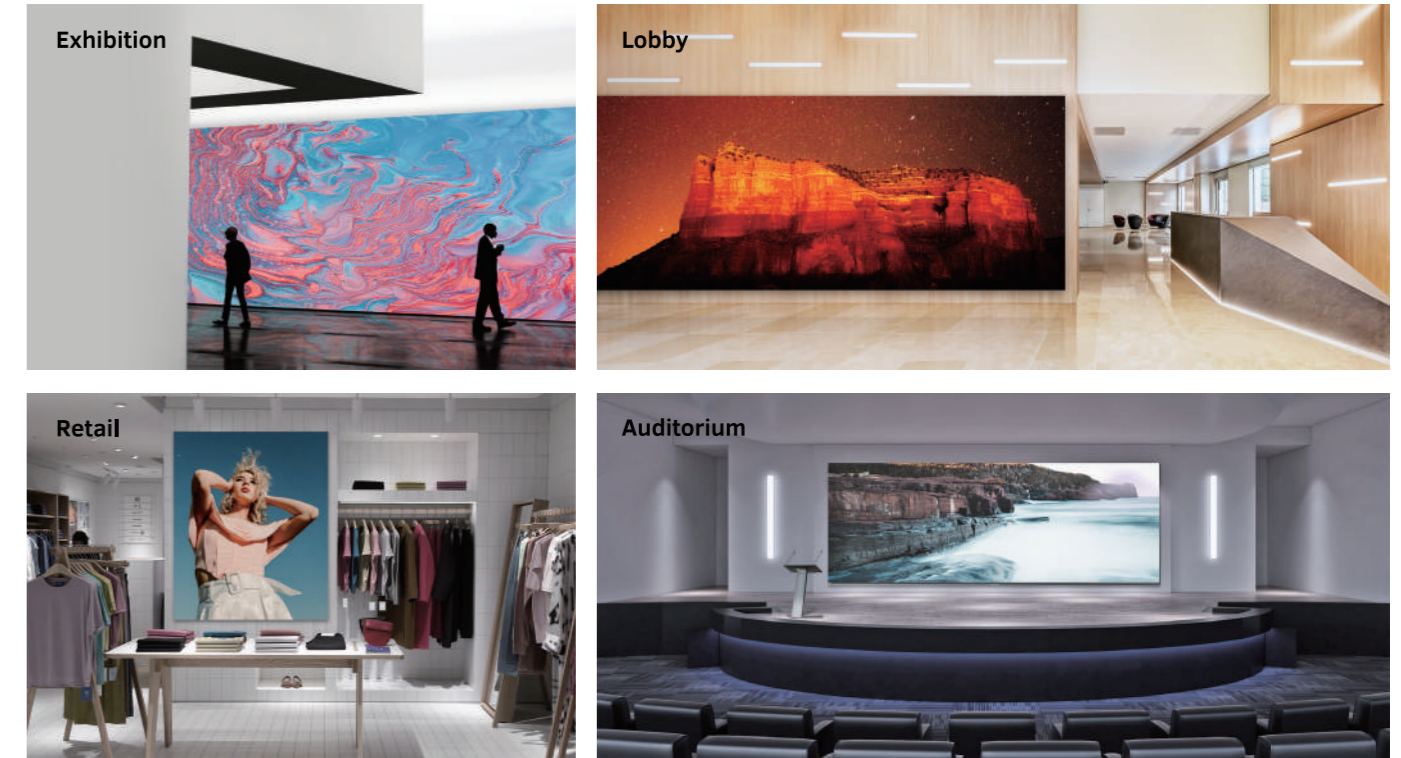


➤ Efficient Installation

The GH31 Series offers simple installation to eliminate setup headaches and no need for expert support. Features include:

- Quick splicing
- Wall-mounted design reduces installation difficulty
- Fine-tuned flatness level

➤ Applications



➤ Specification

Physical Parameter

Model	GH3112	GH3115	GH3118
Pixel Pitch	1.2mm	1.5mm	1.8mm
Pixel Composition	SMD2210	SMD1212	SMD1515
Panel Resolution (WxH)	512×384 pixels	416×312 pixels	348×261 pixels
Panel Dimension (WxHxD)	640×480×31mm	640×480×31mm	640×480×31mm
Panel Dimension (WxHxD)	25.1×18.9×1.2"	25.1×18.9×1.2mm"	25.1×18.9×1.2mm"
Panel Material	Aluminum Alloy	Aluminum Alloy	Aluminum Alloy
Panel Weight	6.2kg(13.7lbs)	6.2kg(13.7lbs)	6.2kg(13.7lbs)
Maintenance Access	Front	Front	Front

Technical Parameters

Brightness	550nits	550nits	550nits
Viewing Angle (H/V)	170°/170°	170°/170°	170°/170°
Color Gray scale	13-bit	13-bit	13-bit
Refresh Rate	3840Hz	3840Hz	3840Hz
Contrast Ratio	6500:1	6500:1	6500:1
Power Consumption (Maximum)	130 watts/panel	110 watts/panel	90 watts/panel
Power Input	100-240VAC 50/60Hz	100-240VAC 50/60Hz	100-240VAC 50/60Hz
LED Lifespan (typical)	≥100,000hrs	≥100,000hrs	≥100,000hrs