

MAXHUB Interactive Flat Panel E2 Series

# EXCELLENCE IN EDUCATION

Best-in-class performance comes easily with the MAXHUB Interactive Flat Panel E2 Series. Combining a pro-grade display with effortless operation and innovative safety features to protect students' health, this classroom all-star meets the unique needs of young learners – and those who teach them.



## > A display that focuses attention, and fuels interaction.

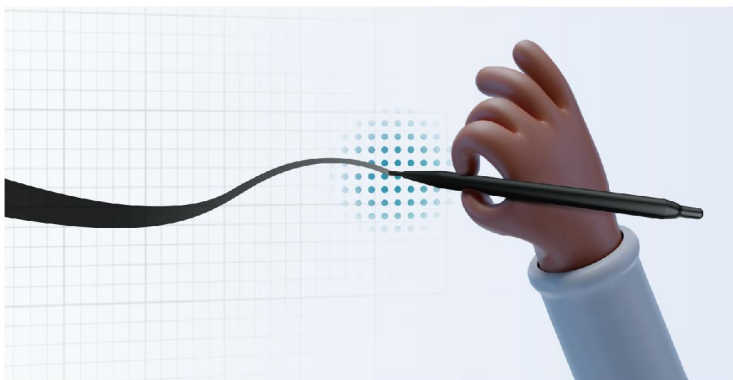
Content comes alive on the E2 Series' 4K, high-contrast screen. Images, text and handwriting are rendered with astonishing sharpness and professional-grade color accuracy. The flicker-free screen reduces eye strain, and anti-glare glass eliminates distracting reflections.

- Flicker-free screen
- 4K resolution with 4000:1 contrast ratio
- Anti-glare glass
- Color  $\Delta E \leq 2$

## > Easy on the eyes.

TÜV-certified to protect eyes and preserve students' vision, the E2 Series' display minimizes visual fatigue by reducing blue light and reflections, eliminating flicker, and automatically adjusting brightness to adapt to the indoor environment.

- Auto screen brightness
- TÜV Certified Low Blue Light
- Eye-care mode
- TÜV Certified Flicker Free



## > Write naturally, right from the start.

Providing a natural writing experience with no learning curve, the E2 Series enables teachers and students alike to write easily, silently and efficiently.

- Zero Bonding technology
- Double nib design, less than 3mm fine nib.
- Up to 20 touch points.
- 40ms writing delay.

## > Share ideas, not germs.

Designed to inhibit bacterial reproduction and other risks, the E2 Series features an optional antimicrobial screen, which is specially coated and manufactured with 3mm tempered glass to protect users from accidental injury.

- SGS Certified.



\* Optional antimicrobial display.

## Maximize utility with simplicity.

Bringing BYOD convenience and capabilities to the classroom, the E2 Series features an all-in-one type C interface for your mobile device.

### Front TYPE-C interface for all-in-one video, audio, touch, network and charging transmission.

Supports audio and display up to 4K@60fps.

Supports charging up to 65W.

Laptop internet access via TYPE-C interface on web-connected the E2 Series displays.



#### Thinks fast, responds instantly.

- 1000mbps Network Adapter
- 4GB, 2Ghz Quad CPU



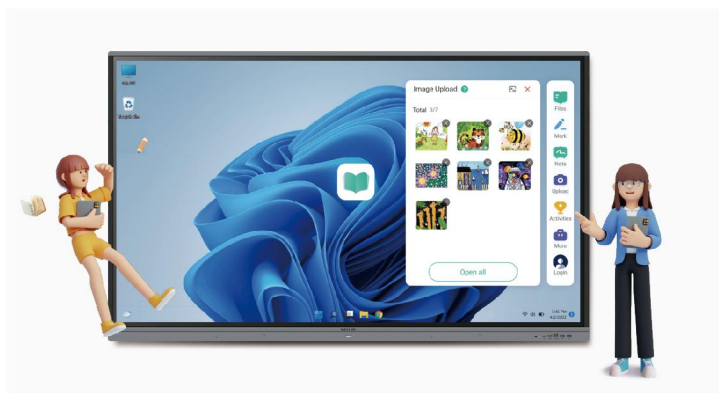
#### Audio that amplifies understanding.

- 2\*16w/8Ωspeaker



#### Backup with dual-system.

- Android 11 + Windows Dual system



#### Bytello Class

### Teach anytime, anywhere.

Cloud-based lesson preparation lets teachers access and share lesson plans with one another anytime, anywhere.



#### Bytello OS

### The ultimate teacher's aides.

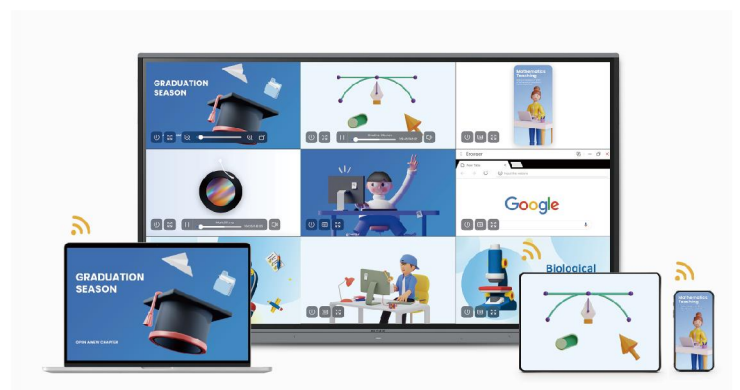
Customize the system homepage and easily access personal account in the exclusive teacher space within Bytello OS.



#### Bytello DMS

### The classroom companion for IT teams.

Bytello DMS makes it easy to set up program operation schedules to automate and simplify IT operations. IT team can also monitor the usage status of equipment and access data for continuous optimization and reporting.



#### Bytello Share

### Teach your students to Bytello Share.

Secure two-way screen sharing on the E2 Series for up to 9 students simultaneously while compatible with all major screen-sharing protocols, including Miracast, Airplay and Chromecast.



[sales@maxhubanz.com.au](mailto:sales@maxhubanz.com.au)



[www.maxhub.com/anz](http://www.maxhub.com/anz)



MAXHUB



MAXHUB



MAXHUB\_Global